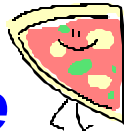




"T.G."

Track Grease & Tomato Pie



"T.P."

Regional Newsletter for the Garden State

NEW JERSEY REGION Volume 5, Issue 2

June 2005

Dana Schwartz, NJ Representative dschwartz@aceonline.org

Joseph Krapf, NJ Assistant Representative jkrapf@aceonline.org

Rolling Along the Track...

Coaster season is in full swing! The weather has finally (and instantly!) turned summer-like and it's time to get out there and do some riding! Good news for ACERs. Even better news for Garden State ACERs, with three new coasters right in our area.

Six Flags Great Adventure has a new coaster that some of you may have heard of by now. Kingda Ka blasts off into the stratosphere at 128 MPH. It's the biggest and baddest, and about as close to heaven as you can get. Yeah, its opening was slightly delayed, and it's experiencing a few "break in" pains, but you've gotta ride it sometime this season. Visit the park's web site for updates and news.



Kingda Ka Photo: Mitch Francisco

With the late opening last year of Clementon Amusement Park's Tsunami, many of you may have missed your chance to ride it in 2004. Well, it's back this year with a new name and the same great thrills. J2 is waiting for all takers. (Pssst! All you folks who collect "rare" coaster memorabilia. Word's out that there are items with the old Tsunami logo for sale in the Clementon Amusement Park gift shop. Get 'em while they last!) And check out the **SAVE THE DATE** notice later in this newsletter.



J2 Photo: Clementon Amusement Park

A little jaunt into eastern Pennsylvania should satisfy your craving for inversions. Dorney Park's new coaster, Hydra the Revenge, is calling your name. Be sure to secure any loose change before riding, or be willing to sacrifice it to the JOJO ROLL!



Hydra, The Revenge Photo: Joe Krapf

ACE Day at Morey's Piers Saturday, August 13, 2005

The annual regional event, ACE Day at Morey's Piers, is ON (rain or shine) for Saturday, August 13, 2004. Besides ERT on Great White, we've got EGT, too, this year (Exclusive Go-Kart Time). See the enclosed flyer for details, which is also available for download on the regional and national ACE web sites.

SAVE THE DATE (or You'll Be SORRY!) Saturday, September 17, 2005

Although the details have not been finalized yet, we plan to pay a return visit this fall to Clementon Amusement Park, with ERT on J2 on the evening of September 17th, after the park closes to the public.

We're also working on another surprise for that weekend, so keep checking the regional ACE web site for updates, watch for email announcements, and keep an eye out for a flyer in the mail later this summer.

Memorial Day Weekend in the Granite State (or: ACE NE Region's Class Act!)

Joe Krapf

Not all coasters are white knuckle rides. Some are just plain fun. Several New Jersey ACEs enjoyed the hospitality of the New England region during its recent event, the Granite State Memorial Day Weekend Adventure, in northern New Hampshire. Parks that were visited included Story Land, Santa's Village and Six Gun City. Whether it was riding Polar Coaster at Story Land, visiting with Rudy at the park entrance of Santa's Village, or go-cart racing at Six Gun City, a good time was had by all. Assistant New England Regional Rep Donna Piper provided lots of group activities for all participants. Kudos to NJ ACE REP Dana "Deadeye" Schwartz for her silver medal in the water gun competition at Six Gun City.



The Granite State Adventurers Take Over Santa's Village

Meet-and-greets with park personal at each stop provided a unique insight into each park's history. Although Six Gun City's new coaster, Gold Rush Express was not yet on site, owner Tom Brady kept the assembled group amused with his story about how to return a ride that does not work properly. The Q & A segment was so entertaining and lengthy that park employees had to stop by and beg Tom to end the presentation so they could close the park and go home.

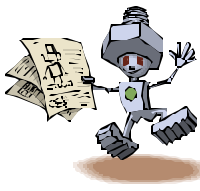
There are lots of regional events out there. Try one – you might like it. (Caution: Should you venture into New England, DO NOT wear NY Yankee paraphernalia if you dine at one of the "99 Restaurant and Pub" locations. They are official sponsors of the Boston Red Sox. I'm lucky to have made it out of the one in North Conway, New Hampshire in one piece!)

Meet Our TV Commercial "Stars"

Last month some of our younger New Jersey ACE members and their parents got to take part in the filming of a TV commercial for Kingda Ka and The Golden Kingdom at Six Flags Great Adventure. Everyone had a lot of fun being "stars" for the day. Here's a group photo sent to us by Anna Maria Tentnowski.



The lucky riders (not in order as pictured above) included Charlie Gobel, Frankie Gobel, Robert Mays, Peche Barcliffe, Joshua Spivak, Shaun Cronen, Nick Pitts, Tom Benton, John Kiernan, Matthew Tentnowski and Anna Maria Tentnowski. Several other ACEs were in attendance that day that do not appear in the photo. Thanks to everyone who patiently waited until the filming finally took place. Watch for them riding Kingda Ka on a Six Flags Great Adventure commercial, appearing on New York and Philadelphia area television stations this season.



Nutz 'n Boltz

Did you know . . .

...that you can update your ACE membership information on the ACE web site? Go to www.aceonline.org and create a user name and password to log onto the members-only area (you'll need your membership number to do this). Once you are logged in you can change or update your mailing address, email address and phone number.

Please be sure to keep your email address current if you want to receive electronic correspondence from us. We continue to get many bounced or inactive email account messages – it's up to you to keep the information current! A list of NJ ACE members with bad email addresses is up on the regional web site. If yours is there, you aren't receiving email from us. PLEASE FIX IT! *Thanks!*

...that you can register for ACE national events on the ACE web site? Go to www.aceonline.org and follow the simple instructions to register and pay for national events using *ConveneMachine*, a secure system that allows you to pay event registration fees by credit card. Easy as pie!

ACE ADDRESS (Ardel, the management company)

ACE's address for membership applications, renewals and event registrations and all other correspondence is:

ACE
13355 Tenth Avenue North, Suite 108
Minneapolis, MN 55441-5554
Phone: (763) 765-2322
Fax: (763) 765-2329



New Jersey Region Web Site

The modest but effective ACE NJ Regional Web Site was created so that those of you with Internet access at home, work, school or through your local library can check for periodic updates

and information from us in between newsletters. Even if you don't have an email account, just stop by a public library that offers free Internet access. Type the following URL into the web browser and you are *there!!!*

Here is the actual web address (don't forget the tilde ~):

<http://home.ix.netcom.com/~dooley7/index.html>

or

Go to the ACE web site (www.aceonline.org) and choose either 'Links' or 'ACE State-by-State' / 'New Jersey' to get to the hypertext "clickable" link to the regional web site.



You say, "But, I don't have email".
We reply, "Well, why not?"

Here's another tip for those of you who don't have Internet access at home. You can create FREE email accounts on the Web. Popular, easy to use ones are provided by Yahoo and Microsoft (Hotmail). Go to www.yahoo.com or www.msn.com and follow the simple instructions to establish a FREE email account that you can check from almost any computer with Internet access (the one at the library, the one at Uncle Pete's condo, the one at your next door neighbor's house). After you create your FREE email account, go to the ACE web page, establish an account there (see info above) and add your new email account to your profile. Next time we download email addresses from the ACE database yours will be included. That way, when we send out those last minute notifications for opportunities that the parks offer, you will receive them!

We've explained this before, but it bears repeating: We cannot telephone members without email addresses for last minute opportunities where there's not enough time to snail-mail (i.e. USPS) notifications to everyone. Nor can we create and maintain "custom" email lists of addresses that do not appear in the ACE database. We can only access the information about *New Jersey* members from the ACE database, so please don't ask us to put your ACE buddy from Colorado on the list. Unless we specifically ask you not to share the information we send out (rarely!), please feel free to team up with other members and spread the messages around. That would help us out a lot! *Thanks!*

Welcome to Our Newest NJ ACE Members! (March - June 2005)

- | | |
|--|--------------------|
| Marli Main | Michelle Allen |
| Robert Sablowsky | Austin Kramer |
| John & Kyle Kiernan | Christopher Walton |
| Brian Lim | Andrew Strauss |
| Frank, Deb, Ian & Jared Holliday | |
| Vincent, Justin, Danielle, Jennifer & Thomas DiMaria | |
| Brian, Courtney, Maria & Blake Gifford | |

* * * * *

Farewell, Fearless Flyers

With great sadness we report the passing of two longstanding New Jersey ACE members. Ted Weisenstein and John Schepacarter rarely missed those early morning ride calls at Six Flags Great Adventure - and always had something chipper to say to wake up the sleepy-headed kids. We will sorely miss their cheerful presence. Here's a picture of the two of them on Nitro, taken in 2001:



John Schepacarter, Ted & Lin Weisenstein & E. Ted Hunter